

baierBOARD

bBS1a AND bBS2 BRACING ELEMENT FIXING SCHEDULE

bBS1a STANDARD baierBOARD ONE SIDE WITH ANGLE BRACE (10mm AND 13mm)

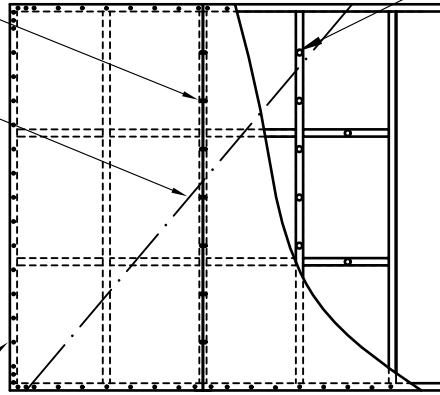
VERTICAL FIXING

32mm x 6g DRYWALL
SCREWS OR 30mm
PLASTERBOARD NAILS AT
300mm CENTRES TO
INTERMEDIATE STUDS OF
BRACING ELEMENT

DAUB OF ADHESIVE AT
300mm CENTRES TO
INTERMEDIATE STUDS
(DWANGS / NOGS OPTIONAL)

CUT-IN ANGLE BRACE

32mm x 6g DRYWALL
SCREWS OR 30mm
PLASTERBOARD NAILS
AT 150mm CENTRES TO
PERIMETER OF BRACING
ELEMENT



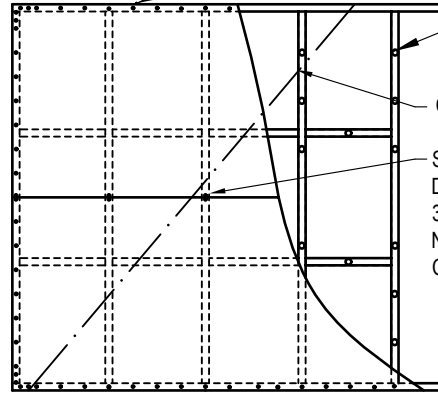
HORIZONTAL FIXING

32mm x 6g DRYWALL SCREWS OR
30mm PLASTERBOARD NAILS AT
150mm CENTRES TO PERIMETER
OF BRACING ELEMENT

DAUB OF ADHESIVE AT
300mm CENTRES TO
INTERMEDIATE STUDS
(DWANGS / NOGS OPTIONAL)

CUT-IN ANGLE BRACE

SINGLE 32mm x 6g
DRYWALL SCREW OR
30mm PLASTERBOARD
NAIL TO SHEET STUD
CROSSING



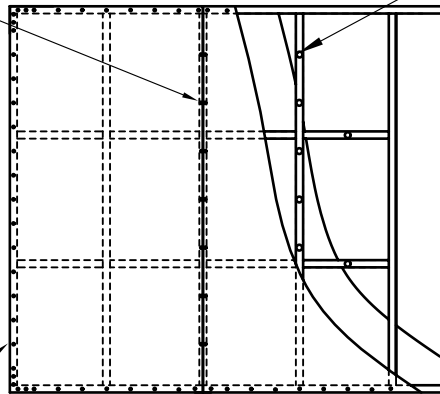
bBS2 STANDARD baierBOARD TWO SIDES NO ANGLE BRACE (10mm AND 13mm)

VERTICAL FIXING

32mm x 6g DRYWALL
SCREWS OR 30mm
PLASTERBOARD NAILS AT
300mm CENTRES TO
INTERMEDIATE STUDS OF
BRACING ELEMENT

DAUB OF ADHESIVE AT
300mm CENTRES TO
INTERMEDIATE STUDS
(DWANGS / NOGS OPTIONAL)

32mm x 6g DRYWALL
SCREWS OR 30mm
PLASTERBOARD NAILS
AT 150mm CENTRES TO
PERIMETER OF BRACING
ELEMENT

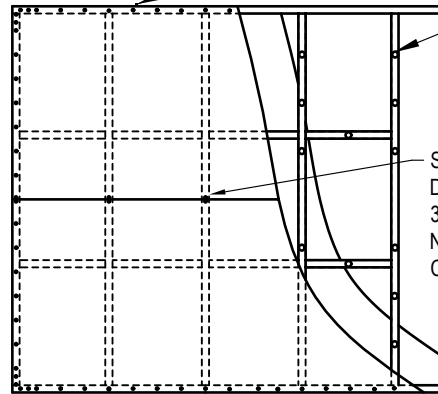


HORIZONTAL FIXING

32mm x 6g DRYWALL SCREWS OR
30mm PLASTERBOARD NAILS AT
150mm CENTRES TO PERIMETER
OF BRACING ELEMENT

DAUB OF ADHESIVE AT
300mm CENTRES TO
INTERMEDIATE STUDS
(DWANGS / NOGS OPTIONAL)

SINGLE 32mm x 6g
DRYWALL SCREW OR
30mm PLASTERBOARD
NAIL TO SHEET-STUD
CROSSING



SHEET CORNER FIXING OF A STANDARD baierBOARD BRACING ELEMENT

FASTENERS 12mm min. FROM TAPERED EDGE AND
18mm min. FROM CUT EDGE.
FASTENERS AT 150mm CENTRES AROUND PERIMETER
STARTING 50mm, 100mm AND 150mm.

